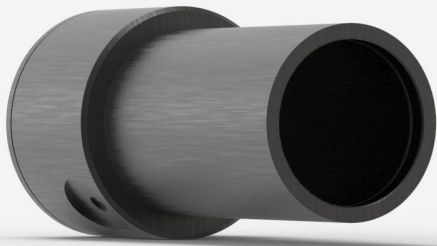




## UM9B-BL-L-D0

Pyroelectric detector for laser power measurement up to 200  $\mu$ W.



### KEY FEATURES

#### VERY LOW NOISE LEVEL

Noise levels of a photo detector, but with the large bandwidth of a pyroelectric: down to 5 nW when using the analog power module (APM).

#### VERY HIGH RESPONSIVITY

Up to 20 000 V/W when using the analog power module (APM)

#### VERY LARGE BANDWIDTH

From DUV to FIR thanks to pyroelectric technology

#### SMART INTERFACE

Containing all the calibration data

#### COMPATIBLE STAND

[STAND-D-233](#)



## SPECIFICATIONS

### MEASUREMENT CAPABILITIES

Maximum average power (continuous)	200 $\mu$ W
Noise equivalent power	5 nW
Spectral range <sup>1</sup>	0.1 - 20 $\mu$ m
Typical rise time	0.2 s
Typical power sensitivity	20000 mV/W
Power calibration uncertainty <sup>2</sup>	$\pm 4$ %
Chopper frequency <sup>3</sup>	5 $\pm$ 1 Hz

1. For the calibrated spectral range, see the user manual.
2. At 633 nm.
3. SDC-500 digital optical chopper sold separately

### DAMAGE THRESHOLDS

Maximum average power density	50 mW/cm <sup>2</sup>
-------------------------------	-----------------------

### PHYSICAL CHARACTERISTICS

Aperture diameter	9 mm
Absorber	BL
Dimensions	38.1Ø X 79D mm
Weight	0.09 kg

### ORDERING INFORMATION

UM9B-BL-L-D0	202241
--------------	--------

Specifications are subject to change without notice. Refer to the user manual for complete specifications.

INTERESTED IN THIS PRODUCT?



GET A QUOTE

Find your local sales representative at [gentec-eo.com/contact-us](http://gentec-eo.com/contact-us)