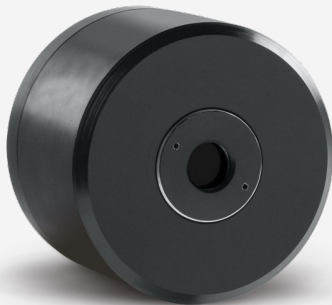




# THZ5B-BL-DZ-D0

THz detector for power measurements up to 20 mW.



## PRODUCT FAMILY KEY FEATURES

### RELATIVE MEASUREMENTS FROM 0.1 TO 30 THZ

Broadband, room temperature operation, easier to use and less expensive than a Golay cell

### WIDE DYNAMIC RANGE

With state of the art pyroelectric sensors, measure down to 50 nW with 1 nW resolution.

### SEVERAL SENSOR SIZES AVAILABLE

Choice of 5 mm and 9 mm diameter

### CALIBRATED

THZ-B detectors are calibrated at a single wavelength (0.63 μm) and include typical wavelength correction data from 0.25 to 440 μm. They are used for relative measurements outside that range.

### SDC-500 OPTICAL CHOPPER

All THZ-B detectors require the use of an optical chopper, like our SDC-500, to sync the signal at either 5 Hz (DA models) or 25 Hz (DZ models).

### USER-FRIENDLY SOFTWARE WITH MANY FEATURES (WHEN USED WITH T-RAD-USB)

- Strip chart, statistics and tuning needle displays
- Controls and power display always visible
- Tuning needle display includes min/max indicators
- Data logging for long term testing

### COMPATIBLE STAND

[STAND-D-233](#)

## SPECIFICATIONS

MEASUREMENT CAPABILITIES	
Maximum average power	20 mW
Noise equivalent power	5 nW
Spectral range <sup>1</sup>	10 - 3000 μm
Frequency <sup>2</sup>	0.1 - 30 THz
Typical rise time	0.2 s
Chopping frequency <sup>3</sup>	25 Hz
Minimum repetition rate	1000 Hz
<div>1. Projected spectral range. From 10 to 440 μm, spectrometer measurement. From 440 to 3000 μm, relative measurement only. This spectral range is subject to change. 2. Projected spectral range. From 10 to 440 μm, spectrometer measurement. From 440 to 3000 μm, relative measurement only. This spectral range is subject to change. 3. SDC-500 digital optical chopper sold separately</div>	
DAMAGE THRESHOLDS	
Maximum average power density	0.01 W/cm²
PHYSICAL CHARACTERISTICS	
Aperture diameter	5 mm
Absorber	BL
Dimensions	66.0Ø x 46.5D mm
Weight	0.23 kg
ORDERING INFORMATION	



Specifications are subject to change without notice. Refer to the user manual for complete specifications.

## INTERESTED IN THIS PRODUCT?

GET A QUOTE

Find your local sales representative at [gentec-eo.com/contact-us](http://gentec-eo.com/contact-us)