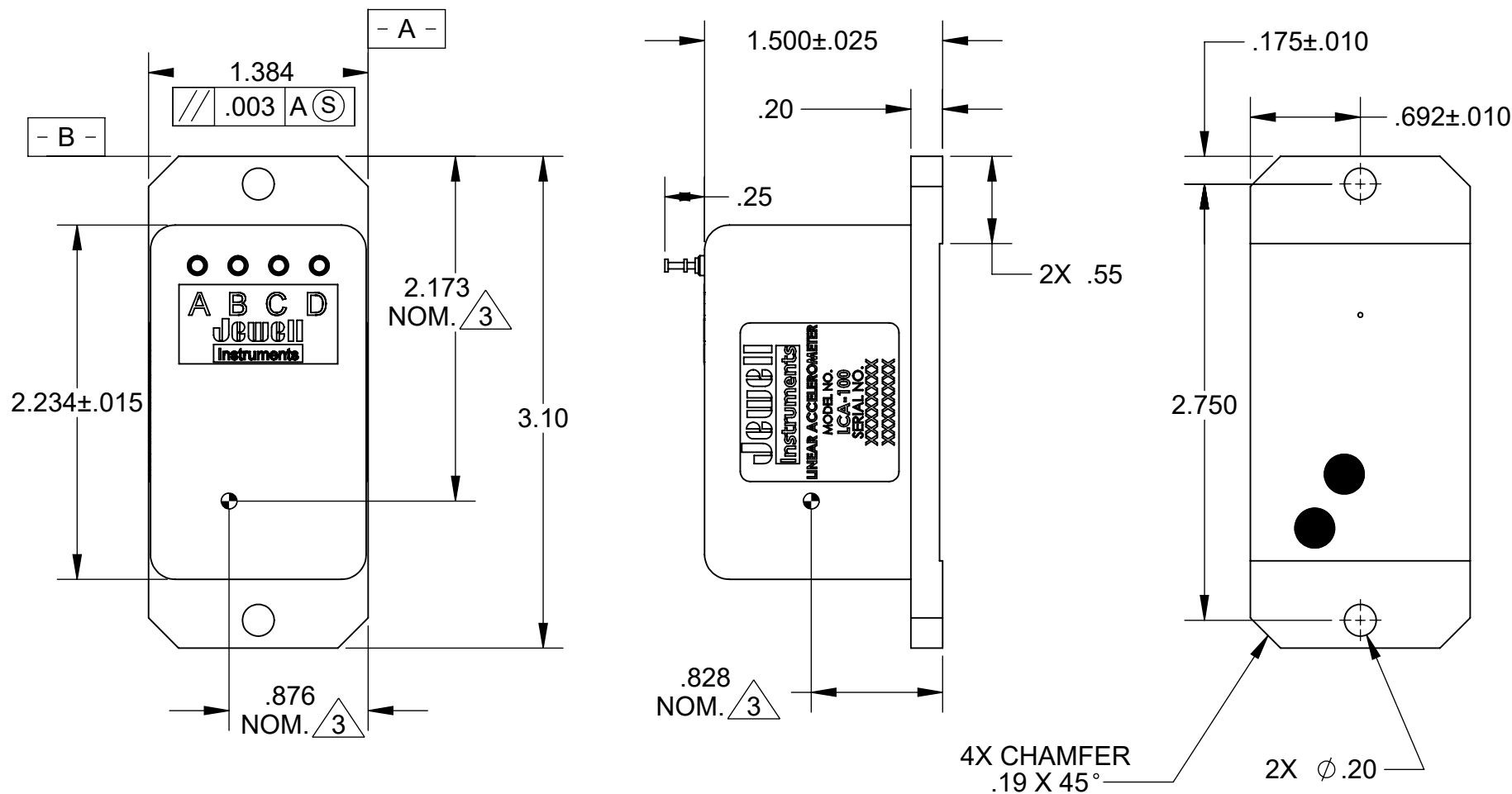
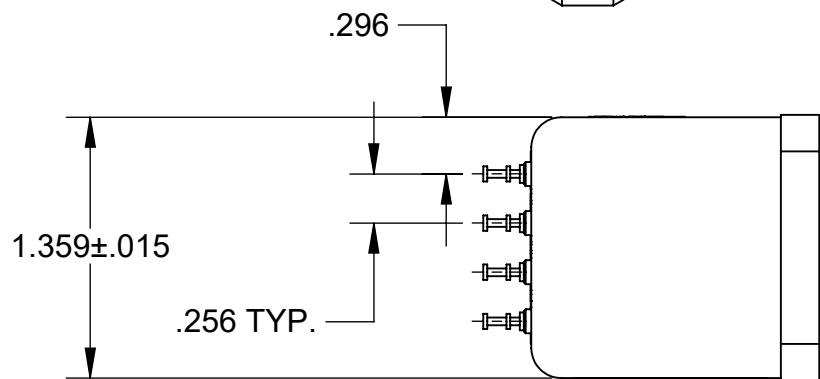
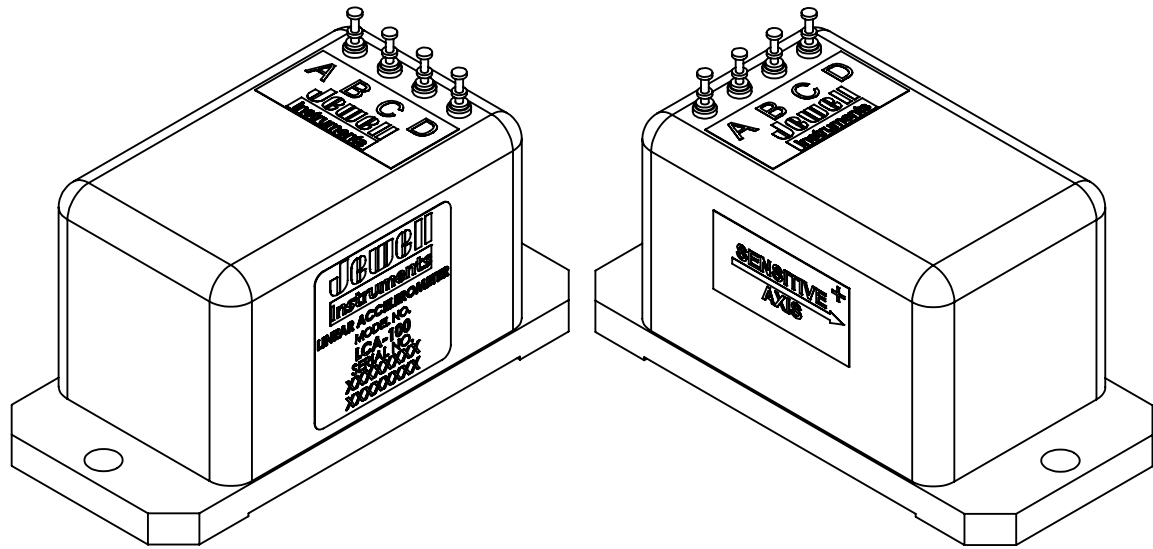


NOTES:

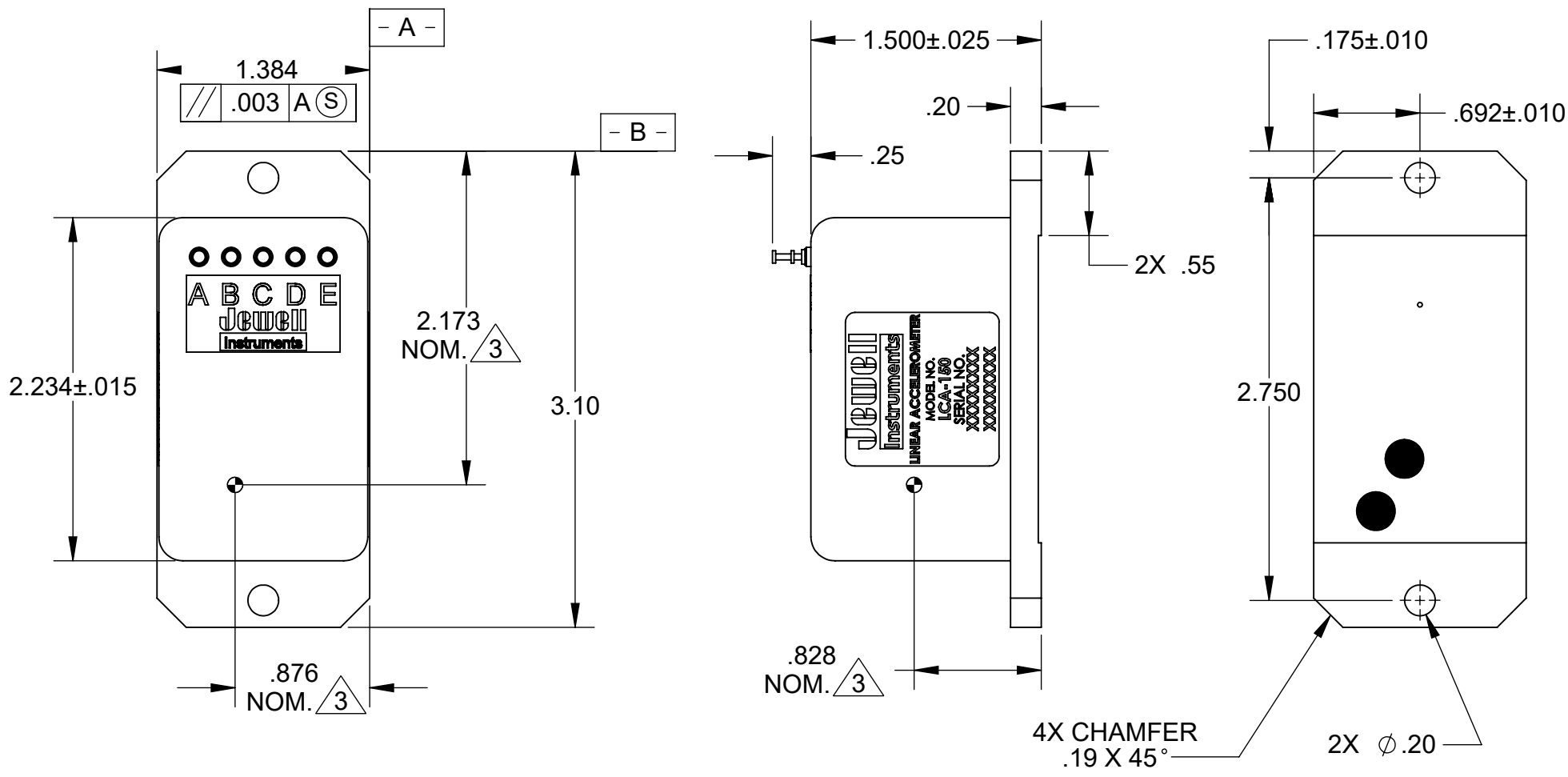
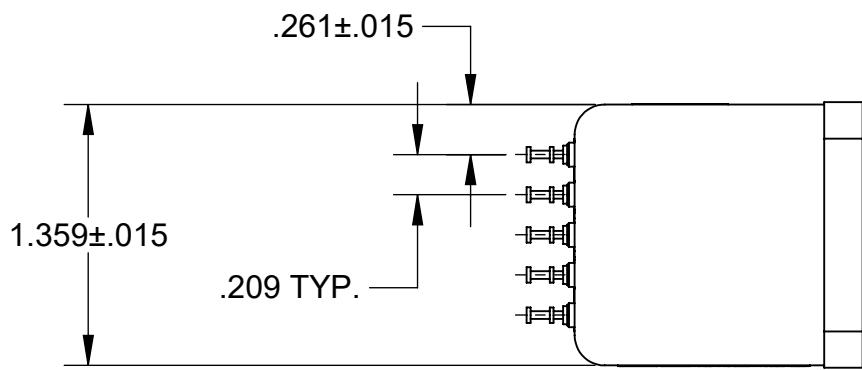
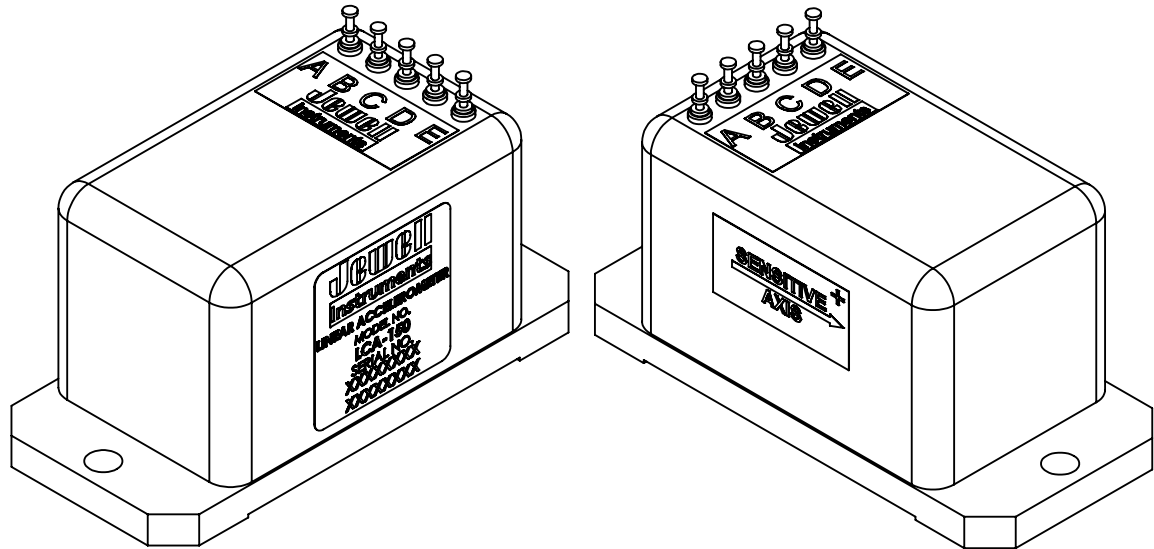
1. DATUM -A- AND DATUM -B- ARE DEFINED AS REFERENCE SURFACES.
2. MAX WEIGHT: 3.3 oz (93.6g)
3. APPROXIMATE LOCATION OF CENTER OF SEISMIC MASS.

PIN	DESCRIPTION
A	+12 TO +16VDC
B	-12 TO -16VDC
C	PWR/SIG COM
D	Eo



LCA-100

PIN	DESCRIPTION
A	+12 TO +16VDC
B	-12 TO -16VDC
C	PWR/SIG COM
D	Eo
E	SELF TEST INPUT



LCA-150

APPLICATION		 MANCHESTER, NH TRIPLETT MODUTEC A&M EMICO	TITLE INERTIAL SENSOR OUTLINE DRAWING LCA-100 & -150	
USED ON	NEXT ASSY		DRAWING NO. OD451040-000	
MATERIAL			SCALE 1:1	CAGE CODE 33005
FINISH			SHEET 1 OF 1	